

PREPARING TO CLEAN THE OVEN

For the oven to operate at peak efficiency, the cavity, door, air filter and grease filter must be kept clean.

A daily cleaning routine will ensure that you comply with the required hygiene standards and will help to maintain and prolong the efficiency of your Merrychef® oven.

EQUIPMENT REQUIRED (not supplied):

- Oven Cleaner approved by Merrychef®
- Heat proof gloves
- Protective rubber gloves
- Non-abrasive nylon scrub pad
- Cleaning towel and cloths
- Eye protection
- Dust mask (optional)



NOTICE
DO NOT USE CAUSTIC CLEANERS ON ANY PART OF THE OVEN OR OVEN CAVITY AS IT WILL CAUSE PERMANENT DAMAGE TO THE CATALYTIC CONVERTERS.



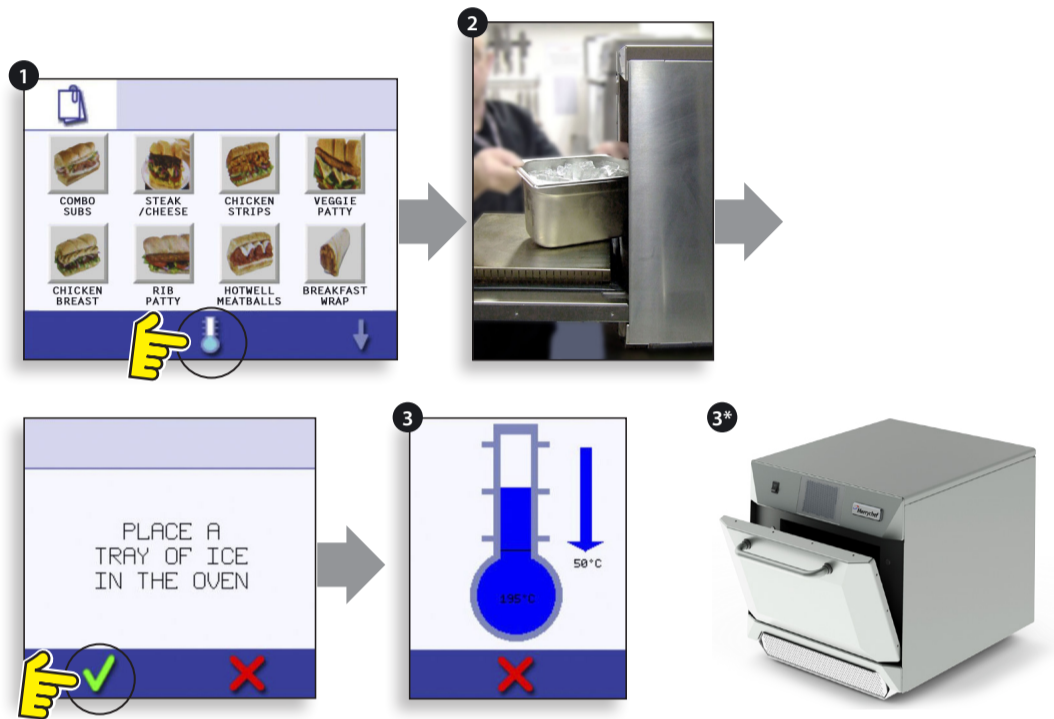
WARNING
THE OVEN MUST BE COOLED DOWN BEFORE THE CLEANING PROCESSES ARE CARRIED OUT.

COOLING THE OVEN DOWN BEFORE CLEANING

- 1 Select the blue thermometer symbol to disable heating and start the cooling cycle.
- 2 Taking all necessary precautions place a suitable container of ice or cold water (to speed up the cooling process) into the hot oven cavity. Select the OK symbol to continue.
- 3 The cooling progress is displayed and takes approximately 30 minutes.

NOTE: To reduce the cool down time to about 15 minutes leave the oven door open slightly during the cooling process (3).*

- 4 Once the cooling process is complete, carefully remove the cool down pan.



WARNING
THE PAN AND WATER MAYBE HOT SO AN OVEN CLOTH OR GLOVES SHOULD BE USED.

- 5 The oven is now ready for cleaning. Select OK on the screen after completing each stage.

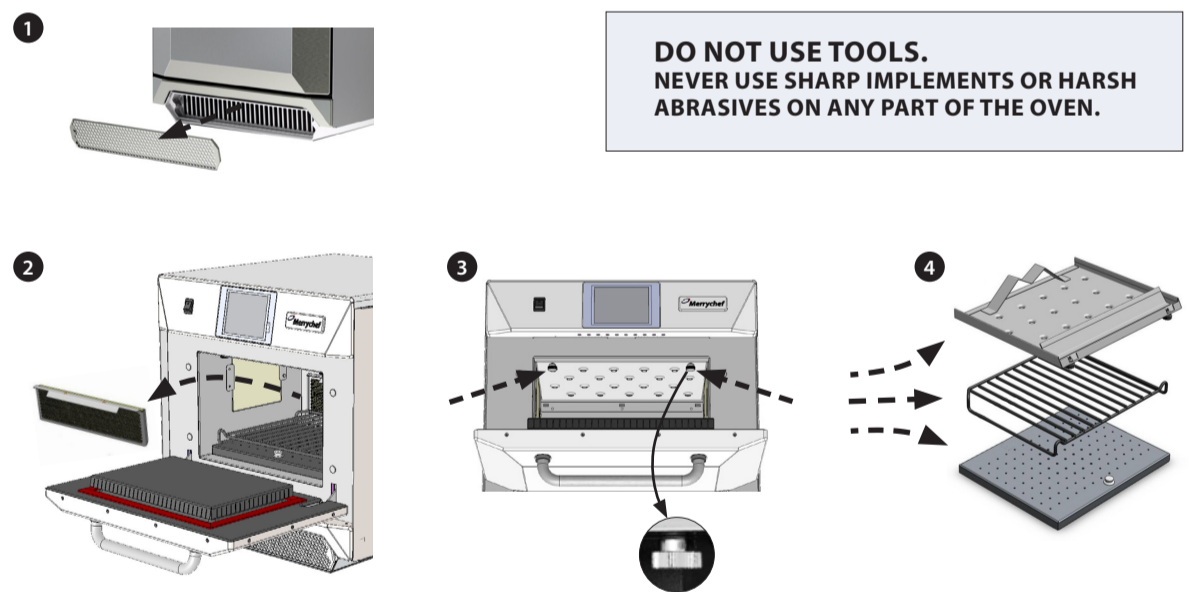
COLD OVEN CLEANING INSTRUCTIONS

Complete cool down procedure and allow the oven and accessories to cool before commencing cleaning.

NOTE: To reduce your cleaning effort clean the oven & oven parts upon store shut-down when the oven is still slightly warm.

REMOVE & CLEAN OVEN PARTS:

- 1 Remove the air filter at the base of the oven.
- 2 Open the oven door and lift out the grease filter assembly at the rear of the cavity.
- 3 Remove the upper impinger plate by undoing the 2 thumb nuts located at the top of the cavity.
- 4 Remove further hardware from the oven cavity: lower impinger plate & wire rack.
- 5 Wash all parts in warm soapy water. Wash off using a clean cloth and plenty of clean, warm water. Ensure all components are dry before re-fitting them.
- 6 Dry using a fresh, clean cloth.



DO NOT USE TOOLS.
NEVER USE SHARP IMPLEMENTS OR HARSH ABRASIVES ON ANY PART OF THE OVEN.

CLEAN THE OVEN:

- 1 Remove any spillages with suitable cloth/paper towel. Use a dry clean brush to remove any food particles from between the oven floor and the inside of the front door.
- 2 Wear protective rubber gloves and protective glasses. Carefully spray a Merrychef® approved Oven Cleaner onto all the internal surfaces of the oven except the door seal.



CAUTION
WEAR PROTECTIVE RUBBER GLOVES WHEN CLEANING THE OVEN.

NOTICE
DO NOT SPRAY DIRECTLY INTO THE FAN OPENING AT THE REAR INSIDE OF THE OVEN.

- 3 For difficult areas, leave to soak for 10 minutes with the oven door open. Use a non-abrasive nylon scrub pad/sponge to clean the cavity, roof and the inside of the door. Do not scrub the door seal or use metallic scourers.
- 4 Wash off using a clean cloth and plenty of clean warm water and dry using a fresh clean cloth or paper towel.
- 5 Replace all the cleaned oven parts.
- 6 Close the oven door and wipe the outside of the oven with a damp cloth.